



**AIR SURFACE**  
LED Flat Panel Light



## KEY FEATURES

- UL, DLC, Damp Rated
- Multiple Sizes
- Built-in Driver
- Up To 110lm/w
- CCT & Wattage Adjustable
- 5 Years Limited Warranty
- Quickship From USA

## NEW CONSTRUCTION AND RETROFIT:

- Class A Office
- High-end Shops
- Contemporary Buildings
- Corridors
- Lobbies
- Hotel
- Hospital

## AIR SURFACE PANELS

The CCT and wattage adjustable FS series led flat panel light provides a modern alternative to traditional fluorescent troffer, reaching up to 110lm/w. The unique internal driver and only 0.68" thickness allow you the ability to install the LED light just about any where, especially for the small and confined space, including surface mounted, recessed and suspended installations methods . It is available for 1-10V dimming with 5 years warranty.





## THINNEST SURFACED MOUNTED

The unique internal driver makes the panel only 0.68" thickness. Nearly NO gap between the panel and the dry ceiling for surface mounted installation.

### Internal Driver, Saving Shipping Costs

The unique internal driver design makes the whole light ultra slim with only 0.68" thickness !



▲ OKT Panel With Internal Driver

▲ Standard Panel With External Driver



Aluminium Alloy Frame



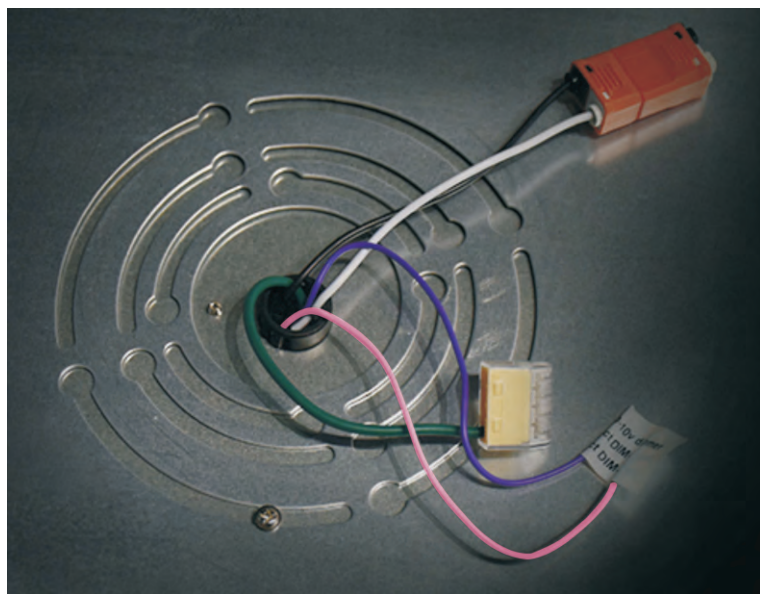
Slotted Design For Compatibility With Multiple Junction Boxes



T-grid Hook For Recessed Installation



Safety Hanging Rope For Added Security And Easier Installation



## COMPATIBILITY

Internal driver and slotted design, compatible with multiple size of junction boxes



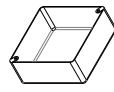
3" Octagon: 2-1/8" Deep



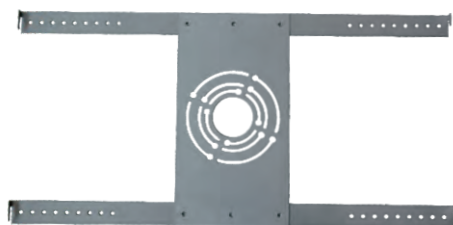
4" Octagon: 2-1/8" Deep



4" Round: 2-1/8" Deep



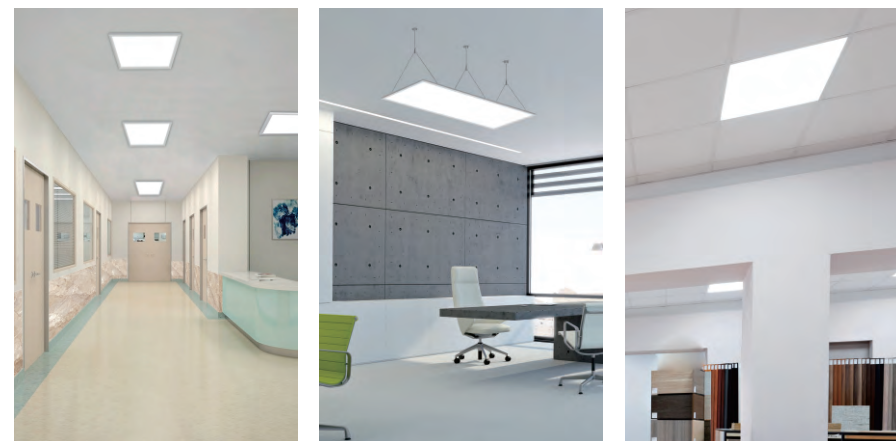
4" Square: 2-1/8" Deep



I-shaped Plate

## Surface Mount

For surface mounting, a surface mount plate is used. This metal plate is equipped with screw holes for bolting to the ceiling, and 4 small static corner hooks on the mounting plate. The panel is then hooked in from below for easy installation.



## OPTIONAL ACCESSORIES



Driver Box

### Recessed

The recessed option allows standard panel recessed installation utilizing a driver box. This metal box is equipped with screw holes for bolting to the panel to protect wires.



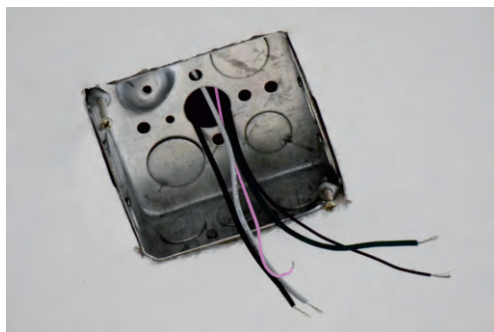
Metal Hooks

The metal hooks are used. Four metal hooks attached to the rear/top can be bent up to make it fastened.

## QUICK MOUNTING

Easy & Quick Surface Mounted Installation  
Only 5 simple steps to complete the whole process within 10 minutes!

### Step 1



Turn off power. Insert the L, N wires of the J-box into the male connector.

### Step 2



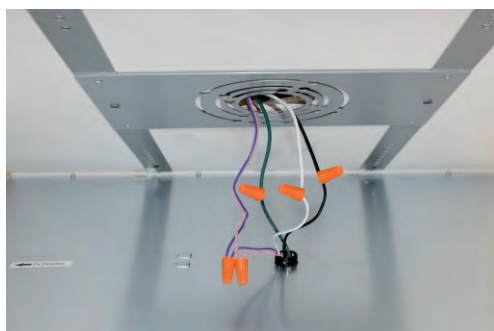
Attach Surface Mounting Kit to J-box

### Step 3



Fix the hanging rope on the hook

### Step 4



Connect the wire and 0-10v dimming wire if needs

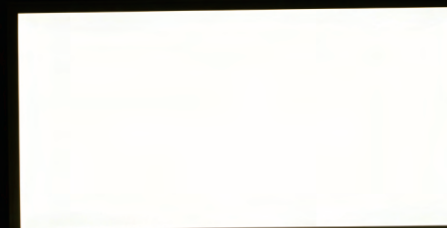
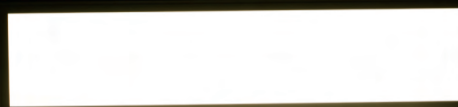
### Step 5



lift panel onto remaining hooks on the surface mounting kit and slide panel until the panel locks

# HIGH EFFICIENCY

Get More Savings With Utility Rebates



## WIDE APPLICATIONS

OKT Panel LED lights are highly efficient lighting solution ideal for use in commercial applications such as offices, factories, retail environments or supermarkets and more.

### SURFACE MOUNTED



◀ Project: Garage  
Address: Houston

Project: Kitchen  
Address: San Francisco ▶



◀ Project: Office  
Address: Connecticut

Project: Hospital  
Address: Kansas City ▶



### RECESSED



◀ Project: Church  
Address: New Caledonia

Project: Piano Museum  
Address: Raleigh, NC ▶



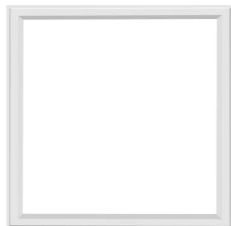
◀ Project: Community library hall

Project: Office  
Address: Toronto ▶



## SPECIFICATION

2'x2'



### FS22-DM-XXT

#### Input Power

40 / 30 / 20 Watts

#### Luminous Flux

4400 lm / 3300lm / 2200lm

#### Efficacy

110 lm/w

#### Input Voltage

100-277V AC

#### CRI

Ra>80

#### Dimming type

0-10V Dimming

#### Mounting

Surface Mounted, Recessed,

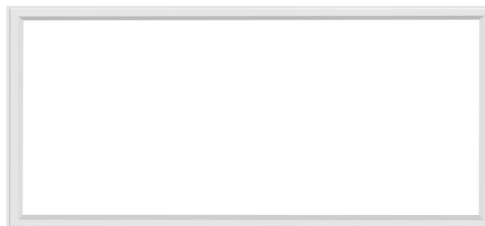
#### Certificate

UL, DLC

#### Dimension

L 23.70" x W 23.70" x H 1.09"

2'x4'



### FS24-DH-XXT

#### Input Power

50 / 40 / 30 Watts

#### Luminous Flux

5500 lm / 4400lm / 3300lm

#### Efficacy

110 lm/w

#### Input Voltage

100-277V AC

#### CRI

Ra>80

#### Dimming type

0-10V Dimming

#### Mounting

Surface Mounted, Recessed,

#### Certificate

UL, DLC

#### Dimension

L 47.70" x W 23.70" x H 1.09"

1'x4'



### FS14-DM-XXT

#### Input Power

40 / 30 / 20 Watts

#### Luminous Flux

4000 lm / 3000 lm / 2000 lm

#### Efficacy

100 lm/w

#### Input Voltage

100-277V AC

#### CRI

Ra>80

#### Dimming type

0-10V Dimming

#### Mounting

Surface Mounted, Recessed,

#### Certificate

UL, DLC

#### Dimension

L 47.70" x W 11.70" x H 1.09"





## American's architectural and commercial LED Lighting Enthusiast

Founded in 2008, OKT is known for quality commercial and architectural lighting in North America. We deliver better light you can see, experience and benefit from. At OKT Lighting, our teams are made up of dreamers and doers who are committed to making better lighting. We're not only focused on making solutions that last, but on redefining what's possible, from the lighting we engineer to the value we add.

## WE ARE YOUR RELIABLE PARTNER

We are your logistics hub. Our network covers entire North America.

- Shipping within 48 hours
- Without Stock Risk
- No Tariff Worries
- Live Inventory Access
- 24/7 Online Service
- Local Assembly\*
- Prompt RMA
- Local OEM
- Dropship

We are your marketing dept., visual marketing support is available.

- Data Sheet
- Sales Sheet
- Installation Sheet
- IES
- Revit Files
- HD Photos
- Video
- Sample Bags
- Professional Product Training