

# META Surface-Wall Mount

Spec-grade | Vertical Architectural LED Linear Lighting

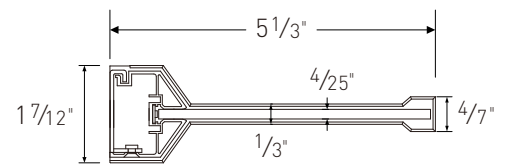
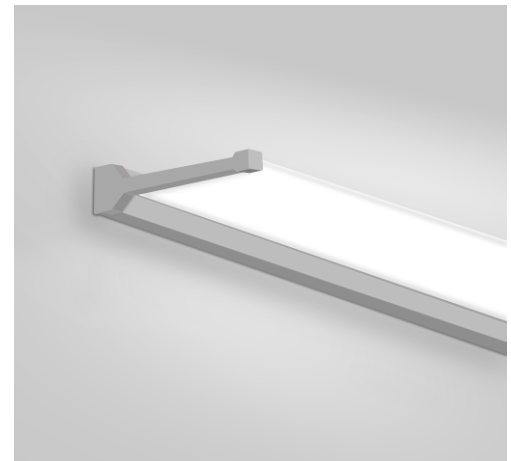


The Meta Surface is available in a surface reverted design, with a sleek low-profile sensibility optimal for architectural lighting applications, ideal for corridors, stairwells, and more. Meta Surface's eye-catching, sloping silhouette profile features an elegant finishing touch, with simple screws or threaded studs which pass through the housing to mount the luminaire in place.

With wattage selectable and CCT adjustable function, Meta Surface also has the flexibility to illuminate many types of spaces, packing a powerful punch of up to 1600 lumen per foot with 90+CRI.

## Feature

- 3 lengths & sloping silhouette
- Transparent optics
- Wattage selectable, up to 1600 lm/ft
- True color, 90+CRI
- CCT adjustable from 3000K, 3500K and 4000K





ADJUSTABLE CCT

3000K
3500K
4000K

SELECTABLE WATTAGE

High
Medium
Low




\*DesignLights Consortium Qualified and classified for DLC standard / premium, refer to [www.designlights.org](http://www.designlights.org) for details

## PERFORMANCE

| Model#    | Length | Lumen Package          |                        |                          |                          |
|-----------|--------|------------------------|------------------------|--------------------------|--------------------------|
|           |        | Wattage                | 3000K                  | 3500K(DLC Qualification) | 4000K(DLC Qualification) |
| LV4-ITW2F | 2'     | 20W                    | 1150lm/ft, 115lm/w     | 1250lm/ft, 125lm/w       | 1200lm/ft, 120lm/w       |
| LV4-ITW3F | 3'     | 20W/30W/40W Selectable | 750~1500lm/ft, 115lm/w | 800~1650lm/ft, 125lm/w   | 800~1600lm/ft, 120lm/w   |
| LV4-ITW4F | 4'     | 20W/30W/40W Selectable | 550~1150lm/ft, 115lm/w | 600~1250lm/ft, 125lm/w   | 600~1200lm/ft, 120lm/w   |

\*All efficacy is ±5% base on different CCT. Check the IES file to gain the accurate data.

# META Surface-Wall Mount

Spec-grade | Vertical Architectural LED Linear Lighting



## STRUCTURE

### Optics

Ultra-thin semi-transparent optics, enveloped in a signature sloping silhouette where the frame meets the optics.

### Finish

Extruded aluminum housing with powder coat white finish.

### Electrical

|                         |  |
|-------------------------|--|
| Min Internal LED Driver | It is powered by Class 2 high efficiency LED driver, with a standard 1-10V dimming which continuous dims to 10% that works with many types of controls. Tested Dimmers: Lutron® Diva-Dvtv, Leviton® IP-710-DL. |
| THD                     | <20%   |
| Power Factor            | >0.9   |
| Input Voltage           | Standard electronic drivers are UL recognized and available for 110-277V or 110-347V * AC input voltage.   |

### LED System

|     |   |
|-----|---|
| CRI | Minimum 90 color rendering index  |
| CCT | CCT adjustable from 3000K, 3500K and 4000K with a great color consistency.  |
| LED | Minimum 50,000h with 87.8% of lumen maintenance in 25°C ambient temperature, in compliance with IES LM-80 testing measurements. |

### Approvals

- cULus listed
- DLC Qualification: DesignLights consortium qualified and classified for DLC Standard, refer to [www.designlights.org](http://www.designlights.org) for details
- Suitable for damp locations
- Designed for indoor use only
- 5 years limited warranty

### Optional Function

Emergency Option

Optional high voltage 8W emergency LED driver EM-H08170-LBF can be provided. When AC power fails, it immediately switches to the emergency mode, operating for lighting up to 120 minutes. When AC power is restored, it automatically returns to the charging mode which meets critical life-safety lighting requirements.



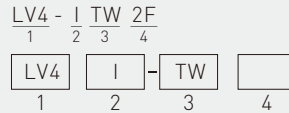
For more info or spec sheet, please visit our website or contact sales.

Emergency Lumen Output:

| FIXTURE EFFICACY | OUTPUT POWER 8W |
|------------------|-----------------|
| 100lm/w          | 800 Lumens      |

## PRODUCT ORDERING GUIDE

### Sample



### 1. Base Model

LV4 Linear Vertical

### 2. Driver

I Internal

### 3. CCT

TW CCT Adjustable: 3000K,3500K,4000K

### 4. Length

2F 2 feet  3F 3 feet  4F 4 feet

## OPTIONAL ORDERING GUIDE

### Optional Function

- Wall Mount Accessory Set (Order Separated)
- LED Emergency Driver (Order Separated)

\*Additional cost and/or lead time on customized fixtures may apply. Some fixtures require an MOQ. Please contact your sales rep for more information.

# META Surface-Wall Mount

Spec-grade | Vertical Architectural LED Linear Lighting

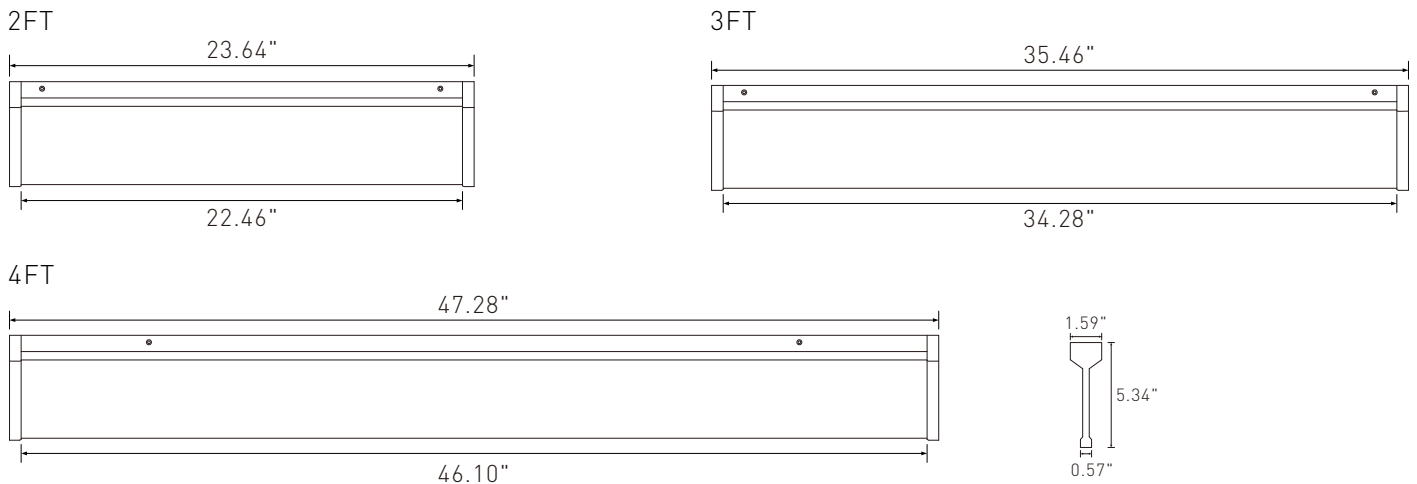


## MOUNTING

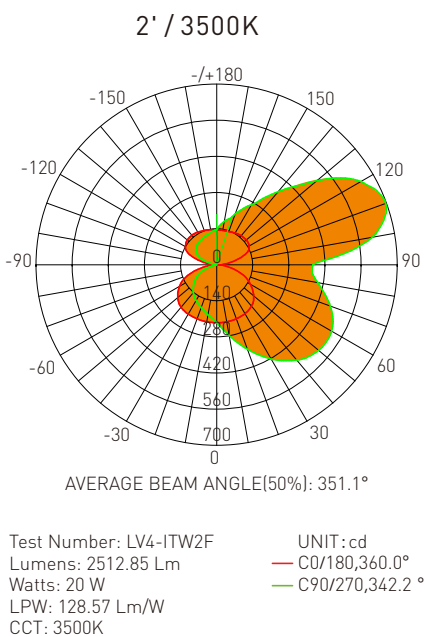
Surface Mounting Kits



## DIMENSIONS



## DISTRIBUTION DIAGRAM



| Zonal Flux Diagram |                       |       |       |       |       |
|--------------------|-----------------------|-------|-------|-------|-------|
| T                  | C0                    | C45   | C90   | C135  | C180  |
| 10                 | 224.9                 | 260.4 | 278.2 | 260.2 | 224.7 |
| 20                 | 223.0                 | 303.3 | 347.6 | 303.8 | 223.2 |
| 30                 | 219.4                 | 341.2 | 421.9 | 345.3 | 221.5 |
| 40                 | 209.9                 | 369.1 | 482.6 | 378.7 | 215.3 |
| 50                 | 187.3                 | 375.2 | 516.3 | 391.0 | 197.7 |
| 60                 | 151.2                 | 351.3 | 514.3 | 373.0 | 166.9 |
| 70                 | 103.0                 | 299.8 | 469.0 | 324.0 | 118.7 |
| 80                 | 43.46                 | 236.7 | 398.2 | 249.3 | 50.06 |
| 90                 | 7.271                 | 207.4 | 372.8 | 202.8 | 3.729 |
| 100                | 53.79                 | 302.1 | 611.9 | 293.1 | 46.49 |
| 110                | 116.7                 | 370.3 | 696.7 | 366.9 | 108.8 |
| 120                | 145.2                 | 364.3 | 646.1 | 364.2 | 140.2 |
| 130                | 150.2                 | 323.4 | 507.3 | 327.7 | 149.4 |
| 140                | 147.6                 | 267.5 | 370.0 | 272.0 | 150.2 |
| 150                | 142.7                 | 216.6 | 268.7 | 219.6 | 146.6 |
| 160                | 137.6                 | 181.8 | 210.5 | 186.2 | 141.7 |
| 170                | 136.0                 | 157.7 | 170.9 | 157.2 | 138.7 |
| 180                | 136.0                 | 136.0 | 136.0 | 136.0 | 136.0 |
| DEG                | LUMINOUS INTENSITY:cd |       |       |       |       |

| Zonal Lumens |          |
|--------------|----------|
| T            | φ total  |
| 0-10         | 21.83    |
| 10-20        | 89.49    |
| 20-30        | 206.0    |
| 30-40        | 370.8    |
| 40-50        | 574.7    |
| 50-60        | 796.0    |
| 60-70        | 1005     |
| 70-80        | 1171     |
| 80-90        | 1289     |
| 90-100       | 1432     |
| 100-110      | 1649     |
| 110-120      | 1892     |
| 120-130      | 2015     |
| 130-140      | 2269     |
| 140-150      | 2383     |
| 150-160      | 2457     |
| 160-170      | 2449     |
| 170-180      | 2513     |
|              | UNIT: lm |

| Luminance cd/(m2) |        |         |
|-------------------|--------|---------|
| G(DEG)            | C0/180 | C90/270 |
| 85                | 2408   | 42710   |
| 80                | 2502   | 22934   |
| 75                | 2773   | 16727   |
| 70                | 3012   | 13714   |
| 65                | 3007   | 11767   |
| 60                | 3023   | 10285   |
| 55                | 2970   | 9059    |
| 50                | 2913   | 8303    |
| 45                | 2849   | 7119    |

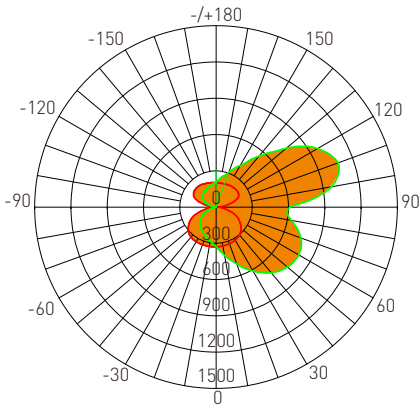
# META Surface-Wall Mount

Spec-grade | Vertical Architectural LED Linear Lighting



## DISTRIBUTION DIAGRAM

3' / 3500K



AVERAGE BEAM ANGLE[50%]: 530.3 °

Test Number: LV4-ITW3F  
Lumens: 3802.9 Lm  
Watts: 30 W  
LPW: 129.45 Lm/W  
CCT: 3500K

UNIT: cd  
— C0/180,360.0°  
— C90/270,340.6°

Zonal Flux Diagram

| τ   | C0                    | C45   | C90   | C135  | C180  |
|-----|-----------------------|-------|-------|-------|-------|
| 10  | 327.0                 | 376.9 | 403.0 | 380.7 | 331.1 |
| 20  | 322.4                 | 434.5 | 501.6 | 445.4 | 331.2 |
| 30  | 315.6                 | 487.4 | 610.2 | 510.0 | 331.4 |
| 40  | 301.1                 | 528.5 | 709.0 | 567.0 | 324.6 |
| 50  | 270.2                 | 543.4 | 769.8 | 594.9 | 301.4 |
| 60  | 221.4                 | 516.6 | 789.7 | 578.0 | 257.9 |
| 70  | 153.7                 | 452.4 | 745.3 | 516.0 | 185.8 |
| 80  | 65.59                 | 367.1 | 633.0 | 419.2 | 79.22 |
| 90  | 10.93                 | 327.3 | 611.0 | 362.3 | 6.695 |
| 100 | 80.27                 | 458.6 | 968.4 | 497.2 | 74.23 |
| 110 | 173.8                 | 552.4 | 1072  | 592.1 | 171.0 |
| 120 | 215.3                 | 535.8 | 972.4 | 568.2 | 217.3 |
| 130 | 221.6                 | 476.1 | 757.5 | 499.7 | 228.5 |
| 140 | 217.8                 | 391.5 | 553.5 | 410.8 | 227.4 |
| 150 | 211.5                 | 317.5 | 398.3 | 327.9 | 220.8 |
| 160 | 204.9                 | 267.5 | 309.8 | 275.7 | 212.4 |
| 170 | 202.7                 | 231.9 | 250.9 | 232.2 | 207.1 |
| 180 | 202.5                 | 202.5 | 202.5 | 202.5 | 202.5 |
| DEG | LUMINOUS INTENSITY:cd |       |       |       |       |

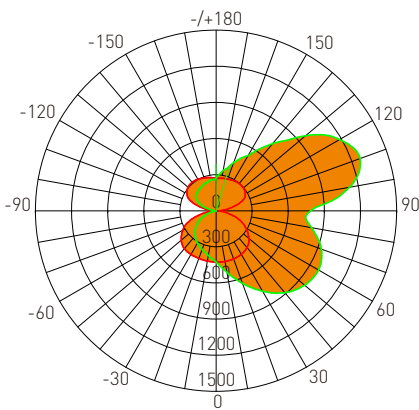
Zonal Lumens

| τ       | φ total  |
|---------|----------|
| 0-10    | 31.83    |
| 10-20   | 130.3    |
| 20-30   | 299.7    |
| 30-40   | 540.2    |
| 40-50   | 839.9    |
| 50-60   | 1170     |
| 60-70   | 1491     |
| 70-80   | 1752     |
| 80-90   | 1943     |
| 90-100  | 2176     |
| 100-110 | 2512     |
| 110-120 | 2879     |
| 120-130 | 3197     |
| 130-140 | 3440     |
| 140-150 | 3610     |
| 150-160 | 3721     |
| 160-170 | 3783     |
| 170-180 | 3803     |
|         | UNIT: lm |

Luminance cd/(m2)

| G(DEG) | C0/180 | C90/270 |
|--------|--------|---------|
| 85     | 3653   | 67819   |
| 80     | 3777   | 36453   |
| 75     | 4161   | 26822   |
| 70     | 4493   | 21791   |
| 65     | 4551   | 18383   |
| 60     | 4429   | 15793   |
| 55     | 4315   | 13717   |
| 50     | 4203   | 11976   |
| 45     | 4090   | 10537   |

4' / 3500K



AVERAGE BEAM ANGLE[50%]: 351.6 °

Test Number: LV4-ITW3F  
Lumens: 4876.5 Lm  
Watts: 40 W  
LPW: 125.42 Lm/W  
CCT: 3500K

UNIT: cd  
— C0/180,360.0°  
— C90/270,343.2°

Zonal Flux Diagram

| τ   | C0                    | C45   | C90   | C135  | C180  |
|-----|-----------------------|-------|-------|-------|-------|
| 10  | 428.0                 | 488.8 | 519.1 | 489.2 | 424.6 |
| 20  | 425.5                 | 563.5 | 640.8 | 566.9 | 421.0 |
| 30  | 418.3                 | 636.4 | 770.2 | 646.8 | 419.7 |
| 40  | 399.2                 | 687.5 | 887.5 | 708.3 | 410.5 |
| 50  | 355.2                 | 705.3 | 961.5 | 738.4 | 378.7 |
| 60  | 286.0                 | 663.9 | 983.1 | 711.6 | 320.2 |
| 70  | 195.1                 | 576.6 | 929.4 | 637.5 | 228.5 |
| 80  | 83.96                 | 465.8 | 803.3 | 522.3 | 97.71 |
| 90  | 16.76                 | 414.9 | 786.3 | 452.3 | 7.746 |
| 100 | 104.3                 | 571.3 | 1124  | 586.8 | 92.95 |
| 110 | 223.3                 | 689.7 | 1273  | 702.4 | 214.3 |
| 120 | 281.5                 | 686.0 | 1185  | 711.2 | 280.1 |
| 130 | 297.2                 | 622.0 | 973.0 | 648.9 | 305.1 |
| 140 | 297.6                 | 528.1 | 729.5 | 553.2 | 310.6 |
| 150 | 291.0                 | 433.8 | 531.8 | 444.1 | 303.7 |
| 160 | 281.6                 | 367.9 | 426.6 | 380.2 | 291.7 |
| 170 | 275.5                 | 315.4 | 340.1 | 315.9 | 281.5 |
| 180 | 269.6                 | 269.6 | 269.6 | 269.6 | 269.6 |
| DEG | LUMINOUS INTENSITY:cd |       |       |       |       |

Zonal Lumens

| τ       | φ total  |
|---------|----------|
| 0-10    | 41.35    |
| 10-20   | 169.2    |
| 20-30   | 389.0    |
| 30-40   | 699.7    |
| 40-50   | 1084     |
| 50-60   | 1504     |
| 60-70   | 1906     |
| 70-80   | 2233     |
| 80-90   | 2476     |
| 90-100  | 2762     |
| 100-110 | 3174     |
| 110-120 | 3636     |
| 120-130 | 4052     |
| 130-140 | 4379     |
| 140-150 | 4611     |
| 150-160 | 4764     |
| 160-170 | 4850     |
| 170-180 | 4877     |
|         | UNIT: lm |

Luminance cd/(m2)

| G(DEG) | C0/180 | C90/270 |
|--------|--------|---------|
| 85     | 4834   | 85979   |
| 80     | 4835   | 46260   |
| 75     | 5283   | 33747   |
| 70     | 5703   | 27174   |
| 65     | 5816   | 22872   |
| 60     | 5720   | 19661   |
| 55     | 5627   | 17062   |
| 50     | 5526   | 14958   |
| 45     | 5412   | 13157   |